



# figuring in --- figuring out

sculptures in bronze by  
**KS RADHAKRISHNAN**

# figuring in figuring out

---

sculptures in bronze by  
**KS RADHAKRISHNAN**

29 Feb. - 20 Apr. 2024



2nd Floor, Phoenix, Nr. Vijay Cross Roads, Navrangpura, Ahmedabad - 380009

[www.archerindia.com](http://www.archerindia.com)



This exhibition reflects eminent artist KS Radhakrishnan's sculptural explorations in bronze, foregrounding his intimate understanding and re-imagining of the figurative, and his deep empathy with the human experience. These works investigate the nature of our experience: liminal, ambiguous, fluid.

At the centre is the human body – desirous, aspiring, and reaching out, ascending/descending (as in his Ramp series), emerging/immersing (as in the work around boats and waves), solid yet weightless and transcendent (as in the Freehold series). Always figuring in/figuring out.

Radhakrishnan is noted for the archetypal figures of Musui and Maiya, with whom he has worked for decades. Musui was based on a tribal Santhal boy from Santiniketan while Maiya – Musui's female counterpart – was sculpted from imagination. The two figures morph into a range of personas – Maiya can be a Santiniketan graduate or the saintly Ma Sarada, while Musui can be a rickshaw-puller or an imp. The 'Freehold' Musuis and Maiyas simply float free from the limitations of gravity.

Radhakrishnan's series of works that are created using tiny interconnected human figures emerged from the artist's sympathetic observation of underprivileged migrants in cities, struggling towards a better life. In many sculptures, these interlinked figures became an ephemeral expression of the smoke emerging from a pot or travellers on boats or passing clouds... resonating with the artist's childhood memories of Kerala.

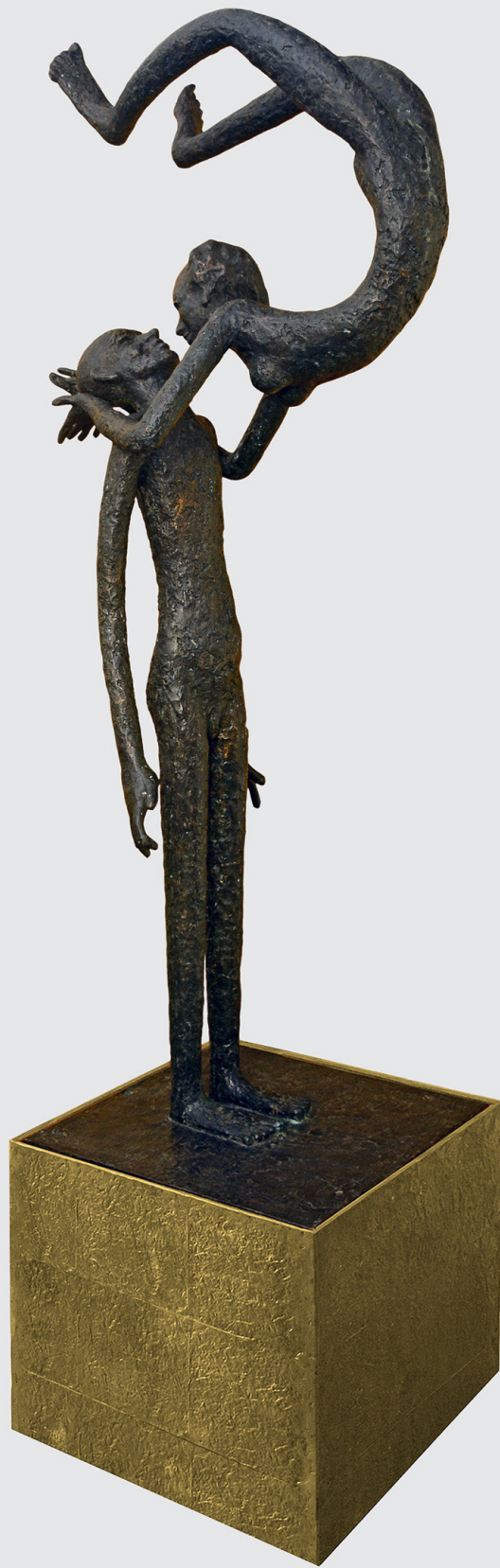
Compassionately concerned with freedom, desire and vitality, Radhakrishnan's works don't make statements, instead they invite the viewers to become participants in a dialogue between sculpture and life itself.





937  
Maiya Freehold  
Bronze  
42 x 36 x 38 inches





1048  
Tapasyi Tarangini - 1  
Bronze  
65 x 26.50 x 19.50 inches



1049  
Maiya as Sharda  
Bronze  
37 x 26 x 24 inches



1050  
Maiya as Liminal Figure 1  
Bronze  
54.50 x 30.50 inches





1051  
Musui as Liminal Figure 1  
Bronze  
57 x 31.50 x 28 inches



1052

Freehold Musui - 1

Bronze

70.50 x 37 x 38 inches



1053  
Heels over the Head  
Bronze  
80 x 26 x 23 inches





1056  
Freehold Musui - 2  
Bronze  
78.70 x 26.70 x 26.70 inches



1067  
Freehold Maiya (Maiya as Writer)  
Bronze  
76 x 42 inches



1125  
Horizontal Maiya - 1  
Bronze  
61 x 66 x 38 inches





1126  
Maiya is both Arrow and Bow  
Bronze  
70.80 x 60 x 27.50 inches



1128  
Maiya is a Postgraduate  
Bronze  
75 x 20 x 32 inches



1135  
Horizontal Maiya  
Bronze  
17 x 7 x 13 inches





1156  
Halfway Through - 2  
Bronze  
13.50 x 14 x 8 inches



1165  
Bahuroopi Maquette  
Bronze  
17.50 x 7.80 x 6.50 inches



1166  
An Undulating Ascent - 2  
Bronze  
31 x 12 x 15 inches



1168  
An Undulating Ascent  
Bronze  
26 x 14.50 x 18 inches





1173  
The Bursting Cloud  
Bronze  
27 x 15 x 18 inches



1185  
Imp on the Portal  
Bronze  
17 x 16 x 29 inches



1186  
Boat into The Wave  
Bronze  
14 x 23 x 21 inches





1187  
Ramp with Five Figures  
Bronze  
30.70 x 18.50 x 7 inches





1189  
Maiya Taking Off  
Bronze  
43 x 21.50 x 26 inches



1328  
Boat on the Wave - 2  
Bronze  
25 x 18 x 25 inches



1333  
Memory Carrier  
Bronze  
23.50 x 14 x 21 inches



1335  
Human Globe  
Bronze  
21.22 x 13.70 inches





1339  
Smooth Sailing of the Boat  
Bronze  
24.50 x 27 x 15.50 inches



1341  
Ephemera (Boat)  
Bronze  
27 x 21.50 x 25 inches



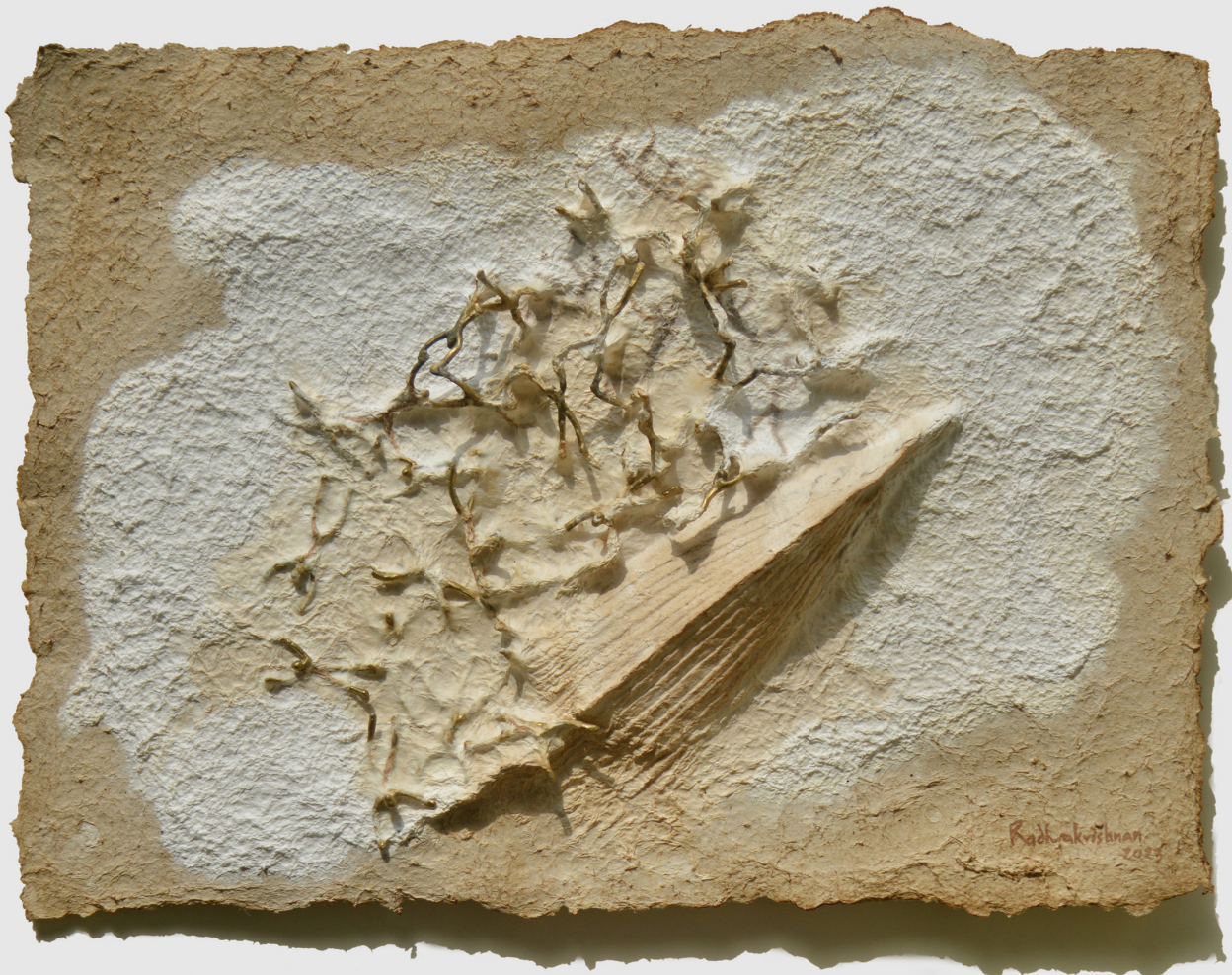


1342  
"My Feet is the Only Carriage"  
Bronze  
28.50 x 32 x 17 inches



1343  
"The One who Drowns, Survives"  
Paper pulp and bronze  
24 x 36 inches





1349  
The Boat of Nostalgia  
Paper pulp and bronze  
24 x 30 inches

# KS RADHAKRISHNAN



K.S. Radhakrishnan (b.1956) is one of the most notable among the new generation of sculptors who has successfully brought about a definitive resurgence in Indian sculpture. Like many of his contemporaries he is a figurative sculptor, but his preference for modeling and bronze casting over new materials sets him apart from the rest of them. Recharging age-old sculptural process with a new sensibility, thus is the singular challenge he brings to modern Indian sculpture. And this makes him a modernist – who approaches his work with discernable ambition and considerable aplomb while steering clear of brinkmanship. With celebration of sensuality as one of its running themes, his works is at once both intimate and universal in its appeal. A personal commemorative sculpture, with a scale and presence that holds well in natural settings, his work has found permanent home in a number of public collections all over the world. (Prof. R. Siva Kumar, Santiniketan) Radhakrishnan was born (1956) in Kerala. He took to painting inspired of uncle P.N. Narayanan Kutty and worked till 1973. Later he completed his Bachelor of Fine Arts and Master of Fine Arts in sculpture from Visva Bharti University at Santiniketan. He was exhibited all across the country and international. His sculptures are in reputed collections across the globe. He is the recipient of several prestigious awards. He lives and works in Delhi / Santiniketan.



